

CERTIFICATE OF LOCATION OF GOVERNMENT CORNER

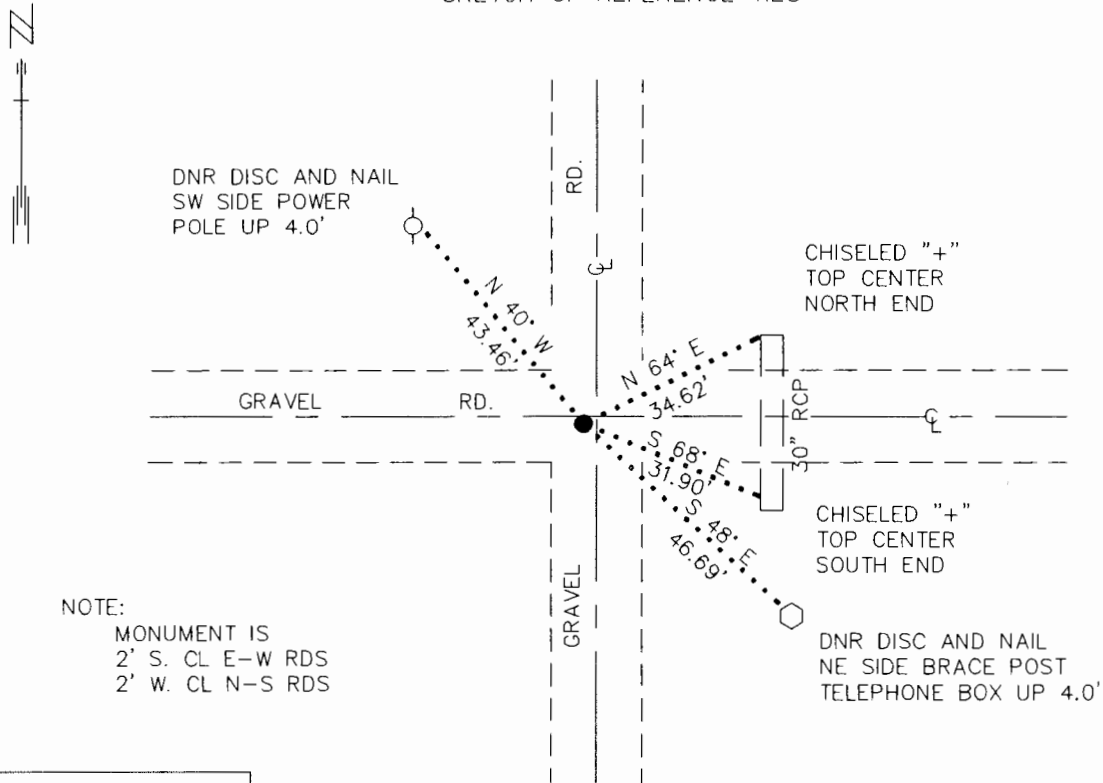
NORTHEAST Corner of Section 21, Township 105 N., Range 42 W., 5 th P.M.

STATE OF MINNESOTA, County of MURRAY

At the corner location shown on the sketch:

- On 8/20/92 found a 12"X 12"X 18" STONE DOWN 0.1' OVER A 12"X 7" STONE
DATE DOWN 1.4'
- left monument as found, lowered monument, removed monument (explain)
- On 9/14/92 Placed a 3/4"X 11" REBAR WITH ALUMINUM CAP
DATE STAMPED "MN DNR SURVEY MARKER", DOWN 0.5'

SKETCH OF REFERENCE TIES



NOTE:
 MONUMENT IS
 2' S. CL E-W RDS
 2' W. CL N-S RDS

1983 MURRAY COUNTY
 COORDINATE SYSTEM
 N = 116021.965
 E = 469088.635

BEARINGS OBSERVED WITH COMPASS

Statement of evidence relative to this corner location is on back of page. 10/7/92
 WMA01187.00.00.01

I hereby certify that this document and the data contained herein was prepared by me or under my direct supervision.

Lowell R. Pommeroy 10-26-92
 SIGNATURE DATE

Registration No. 17005

- Land Surveyor, Professional Engineer
- County Surveyor, County Engineer

OFFICE OF THE COUNTY RECORDER

County of MURRAY

I hereby certify that this document was filed in the Co. recorders office on 10-27-1992 .M. on the 27 day of OCT 1992 A.D., 19

County Recorder *Jamie V. Johnson*

By _____, Deputy

DOCUMENT NO. _____

Northeast Corner Section 21, Township 105 North, Range 42 West

The DNR Bureau of Engineering contacted the following offices for information on this corner:

MN Secretary of State
Murray County Recorder and Highway Engineer
Moseng Land Surveying at Marshall
Madsen Land Surveying at Fairmont

1861 The U.S. General Land Office notes, on file in the Secretary of State's Office, show the corner marked with a post, made mound with trench and pits as per instructions.

1930 Surveyor's Record Book A, on file in the County Recorder's Office, on page 358, states the following; "found old corner. placed stone with short stone on north side". Corner is shown to measure:

2673.5 ft. from the north quarter corner Section 21

2637.9 ft. from the east quarter corner Section 21

This information is also on file in the County Highway Engineer's Office, however three reference ties appear in a different handwriting.

1931 Surveyor's Record Book A, on file in the County Recorder's Office, on page 372, states the following; "See Sec 21". The corner is shown 2642.5 ft. from the north quarter corner Section 22.

1992 August 20, the DNR Bureau of Engineering hired a backhoe operated by Dudley Johnson of Johnson Ditching and Plumbing from Lake Wilson, to dig for evidence of the corner. Dug at the intersection of roads north-south and east-west. Found a 12"x 12"x 18" granite stone, down 0.1 ft. over a 12"x 7" stone down 1.4 ft. with a smaller stone on its north side down 2.0 ft. Stone that is 12"x 7" is upright with a peak and very solid indicating a large vertical dimension. Placed a 3/4"x 24" iron rod on the north side of the large stone, down 2.0 ft. Discarded the surface stone and placed a DNR Survey Marker over the peak of the large stone. Stone was found to measure:

2636.09 ft. from the east quarter corner Section 21

2642.85 ft. from the north quarter corner Section 22

Analysis of the available information led the DNR Bureau of Engineering to conclude that the found stones mark the location of the corner.